



FreemanHomes

ENERGY-EFFICIENT
EPC A-RATED HOMES



DAYLESTONE PARK

ALDERTON, GLOUCESTERSHIRE

HBF Home
Builders
Federation



Customer Satisfaction 2025



By FreemanHomes

WELCOME TO



DAYLESTONE PARK

ALDERTON, GLOUCESTERSHIRE

Situated on the north-western edge of the Cotswolds, in the picturesque village of Alderton, Daylestone Park offers the perfect balance of rural tranquillity and superb connectivity. Nestled at the foot of the Cotswold escarpment, Alderton enjoys breathtaking views of rolling hills and unspoilt countryside – an idyllic setting for outdoor pursuits such as walking, cycling, and exploring historic villages.

Despite its peaceful charm, Alderton is ideally positioned just a short drive from much-loved Cotswold destinations including Winchcombe, Broadway, and Stow-on-the-Wold, as well as the vibrant towns of Cheltenham, Tewkesbury, and Gloucester.

This exceptional collection of homes offers more space, more style, and an outstanding specification. Surrounded by ecologically landscaped open spaces, scenic countryside, and the characterful village of Alderton, these homes are thoughtfully designed to blend beautifully with their surroundings. Expect distinctive details – homes full of character, featuring stone in golden Cotswold hues amongst earthy tones, classic porches and canopies in quintessential Cotswold style, quiet private corners, and generous outdoor spaces. All complemented by our Signature interior specification, designed to stand apart from the crowd.

MORE SPACE, MORE STYLE, AND AN OUTSTANDING SPECIFICATION

Each property at Daylestone Park has been thoughtfully designed with your comfort, convenience, and enjoyment in mind. We have partnered with leading architects to curate a development that brings together a choice of flexible property layouts and generous outdoor areas, ensuring there is no shortage of space inside or out. A superior specification presents luxury features, appliances, and renewable technologies, chosen to create modern homes that achieve A-rated energy assessments without compromising on design or style.

At Daylestone Park, we have positioned the properties to make the most of the surrounding countryside and drawn inspiration from local architecture to design homes that complement the area's existing style and aesthetic.

For those who reserve early, we offer the opportunity to further personalise your new home – from kitchen cabinets and flooring finishes to additional security and sustainable features. Our Freeman Choice range of options will help you make your new property feel like home before you've unpacked the first box.

Talk to our friendly team and let us tell you more about the properties and surrounding area.

We look forward to meeting you.

Luke Freeman

Founder of Freeman Homes and Group CEO



Open countryside views around Alderton



Broadway Tower



Countryside living

Gloucestershire countryside views

FreemanHomes

THE COTSWOLDS, AN AREA OF
OUTSTANDING NATURAL BEAUTY



A WELL-CONNECTED COMMUNITY



Distances and times are approximate

WHAT'S NEARBY

Eat & Drink

Gloucestershire is renowned for its exceptional local produce, so it's no surprise that there are numerous fantastic places to eat and drink right on your doorstep, catering to every taste. Charming country pubs abound, each offering something unique: savour classic British pub fare at The Gardeners Arms, in the heart of Alderton; enjoy a hearty Sunday roast at The Royal Oak in nearby Gretton, just two miles away; indulge in refined dining at The Lion Inn in Winchcombe, under four miles away, where seasonal dishes are expertly crafted in a stylish and cosy setting. Alternatively, The Longhorn Bar & Grill, located just a few miles away in Teddington, is a standout steakhouse that sources much of its produce from its own Teddington's Farm Shop, carefully selected from across the Three Counties and the British Isles. For even greater variety, Cheltenham, just ten miles away, is a food lover's paradise. From artisan coffee shops and independent bakeries to Michelin-starred restaurants, the town offers a wealth of outstanding dining experiences.

Shopping

Less than three miles from Daylestone Park, Teddington's Farm Shop — affectionately nicknamed 'Teddy's' by the local community — is a delightful shopping destination featuring a butchery, pantry, gift shop, wine cellar, and coffee shop kitchen: a true celebration of the finest local produce and artisanal craftsmanship.

A short drive away, the historic market town of Winchcombe boasts charming independent shops, cafés, and delis.

For a broader selection, Cheltenham, just ten miles away, offers a wide range of high-street brands and boutique stores, as well as premium supermarkets including Waitrose and Marks & Spencer Foodhall.

Nearby Tewkesbury features a vibrant market and a variety of independent shops, ideal for a leisurely shopping trip steeped in history. Closer to home, Alderton Village Stores is well-stocked, ensuring you needn't travel far for everyday essentials.

For a luxury retail experience, the Cotswolds Designer Outlet — the UK's newest outlet destination — is approximately a 10-minute drive away. Situated next to Dobbies Garden Centre just off the M5 at Junction 9 for Tewkesbury, it brings together a curated collection of global brands with local Cotswold character.



Culture

From traditional country fairs to nationally acclaimed festivals, the surrounding area offers an exciting calendar of events year-round. Cheltenham Festivals present world-renowned celebrations of Jazz, Science, and Literature, hosting a range of artists from celebrated musicians and bestselling authors to rising stars and thought leaders. The Cheltenham Festival, a highlight of the jump racing calendar, delivers a four-day spectacle of sport and pageantry. Tewkesbury Medieval Festival brings history to life with thrilling reenactments, while the Winchcombe Festival of Music and Arts celebrates local talent across genres. For live performances, film screenings, and comedy nights, The Roses Theatre in Tewkesbury offers a vibrant cultural hub for all ages.

Health & Wellbeing

Alderton's stunning countryside setting encourages an active and balanced lifestyle. Explore scenic walking trails across the Cotswolds, including routes leading to historic landmarks such as Belas Knap and the majestic Sudeley Castle.

Local gyms and leisure centres in Tewkesbury and Cheltenham offer modern facilities, while yoga and Pilates classes are often held in Alderton's village hall. The rolling Cotswold hills also provide an idyllic backdrop for cycling, trail running, or simply connecting with nature.

For a truly luxurious wellness experience, the Bamford Wellness Spa at Daylesford Organic Farm offers a curated range of treatments, classes, and state-of-the-art facilities designed to promote holistic wellbeing in a tranquil rural setting.

Education

Alderton is well-served by excellent educational options, making it an ideal location for families. Oak Hill Church of England Primary School is located within the village, providing a nurturing learning environment for younger children.

For secondary education, Winchcombe School offers a broad and balanced curriculum. In Cheltenham, both Pate's Grammar School and The High School Leckhampton are rated Outstanding by Ofsted and are highly sought after.

The area is also within easy reach of prestigious independent schools, including Cheltenham College and Dean Close School, which both offer exceptional academic and extracurricular programmes.



Alderton's stunning countryside setting

FreemanHomes

SAY HELLO TO
A BRIGHT AND SPACIOUS HOME



DAYLESTONE PARK

DAYLESTONE PARK | 6

OUR SIGNATURE SPECIFICATION

Let your personality shine through in your new home with the Freeman Choice of options and upgrades. We will talk you through the items available and offer more detailed information to assist with decision making, helping you to personalise your home.

The homes at Daylestone Park feature the Freeman Homes' Signature Specification, combining meticulous attention to detail with premium branded appliances, technologies and products.

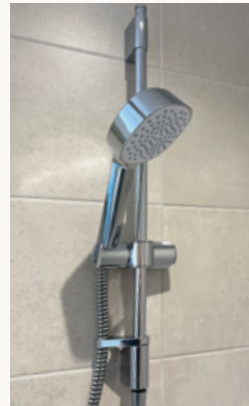
Kitchen

- Beautifully designed, fully fitted kitchen
- Soft close doors and drawer units with integrated cutlery tray
- Choice of worktops with matching upstand (subject to build stage)
- NEFF integrated single oven
- Integrated dishwasher
- Integrated 70/30 fridge freezer
- NEFF induction hob, stainless steel splashback and cooker hood
- Utility room with space for one or two appliances (where house type and design dictates)



Bathroom, En suite and Cloakroom

- Roca sanitaryware
- Hansgrohe chrome fittings
- Mira Evoco shower with low profile shower tray to bathrooms and en suites
- Wet underfloor heating to ground floor, and electric underfloor heating to first floor, bathrooms and en suites
- Classic straight towel rail in chrome to bathrooms and en suites, with dual fuel heating element to control separately to central heating
- Shaver socket to bathrooms and en suites
- Porcelanosa half-height tiles with full-height wall tiles to shower enclosure and bath



Finishes

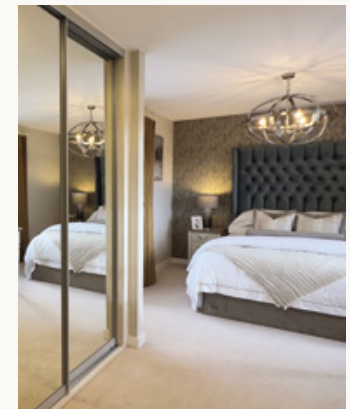
- Luxury carpet to stairs, landing, bedrooms and living room
- Hard flooring to kitchen and hallway
- Fitted wardrobes with sliding doors to bedrooms (as design dictates)
- Natural stained oak handrail
- Internal walls and ceilings finished in Crown White
- Internal woodwork finished in Crown Brilliant White
- uPVC windows, patio, utility, and garage personnel doors finished in Agate Grey
- Composite natural grained front door with clear glass finished in Reseda Green, Olive Green or Agate Grey dependent on plot
- Glazed sliding doors or French patio doors leading to patio and garden
- Oak Veneer prefinished internal doors

Safety and Security

- External multi-point locking door with thumb lock
- Window locks

Energy-efficient Heating, Lighting & Electrical

- Viridian roof integrated Solar PV panels including 5.0 kWh storage battery
- NIBE Air Source Heat Pump
- Project EV 7.3kW electric car charging point
- Underfloor heating and /or Stelrad Compact radiators (as design dictates)
- Low energy downlights and pendant lighting (as design dictates)
- Ample sockets throughout, including BT point in living room
- TV points to kitchen, living room and all bedrooms
- USB charging port sockets to kitchen and master bedroom
- Pendant light to loft



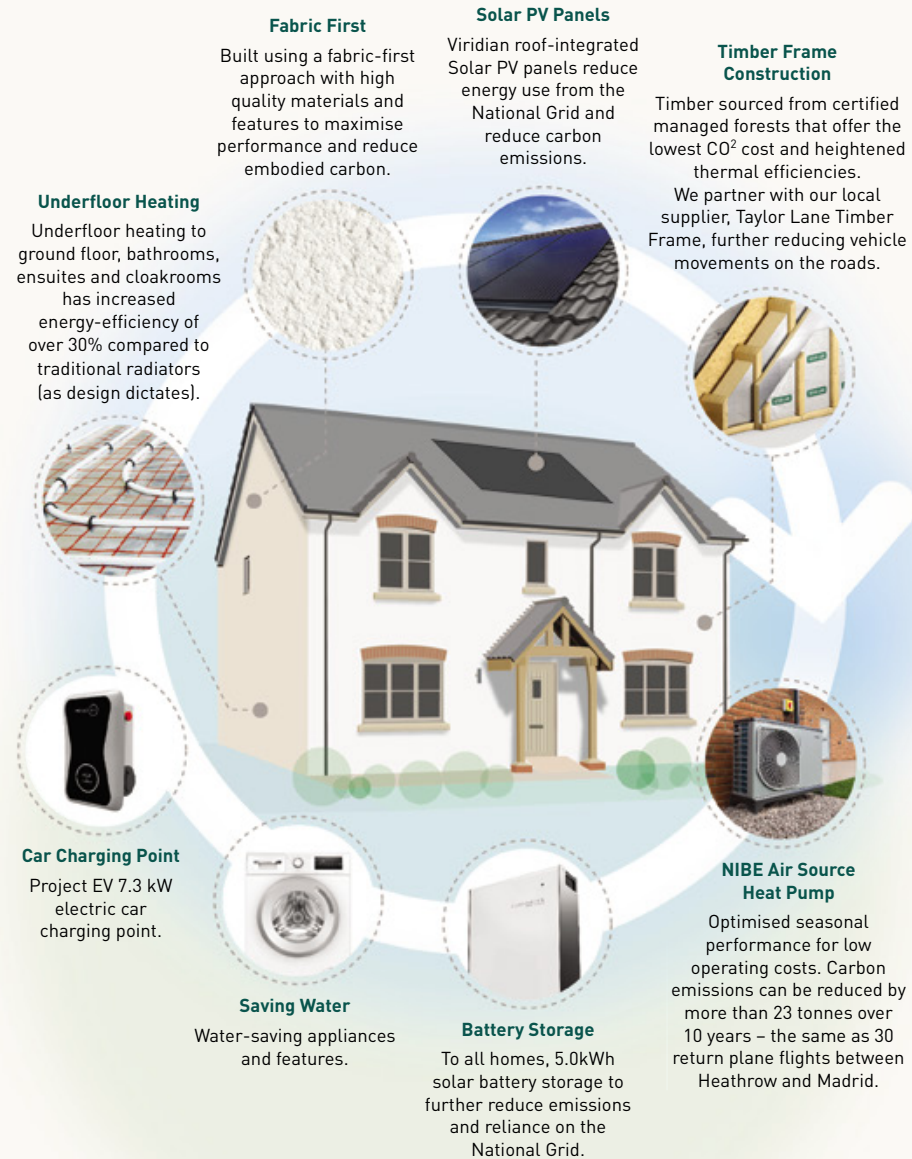
EPC A-RATED HOMES

Zero carbon living, sustainable features

Our approach to sustainability is about carefully considering the future and ensuring that we build communities that create a positive impact. We adopt a fabric-first approach to design, partnering with market-leading renewable technology brands to maximise energy performance, reduce carbon emissions, and lower embodied carbon. The result is an EPC A-rated property with significantly lower running costs.



SUSTAINABLE LIVING AT DAYLESTONE PARK



Environmental Details



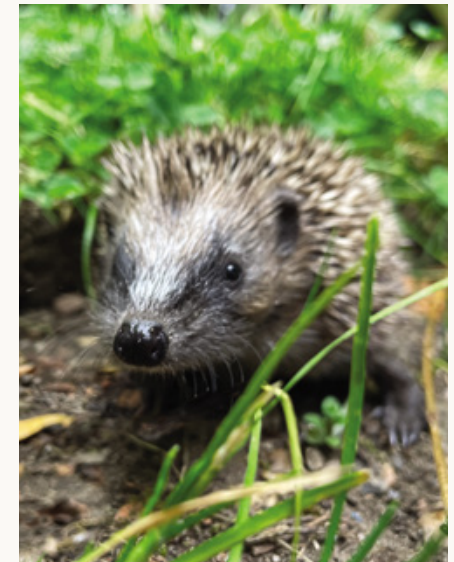
Energy-efficient EPC A-rated properties

Market leading renewable energy technologies

- Hedgehog-friendly fencing allows hedgehogs to roam freely in search of food and mates
- Hedgehog houses within the shared open areas provide shelter and somewhere to nest
- Bird boxes provide a home for nesting birds, and bat boxes provide a place for bats to roost
- Bee bricks for nesting solitary bees
- Significant ecology landscape planting
- Dual flush mechanism to toilets to reduce water use
- Double-glazed windows providing a high level of thermal insulation and reduced heat loss
- High levels of insulation within roof spaces and external wall cavities, to limit heat loss in the winter and reduce heat gain in the summer
- Significant recycling of waste materials and packaging during the construction of each home
- Rainwater butt and garden composting bin

Garden & Garage

- Lighting and double power socket to garage
- Up and over garage door
- External tap
- Landscaping to front garden and turf to back garden
- External, low-level, wildlife-friendly lights to front and back of property
- Patio to rear garden



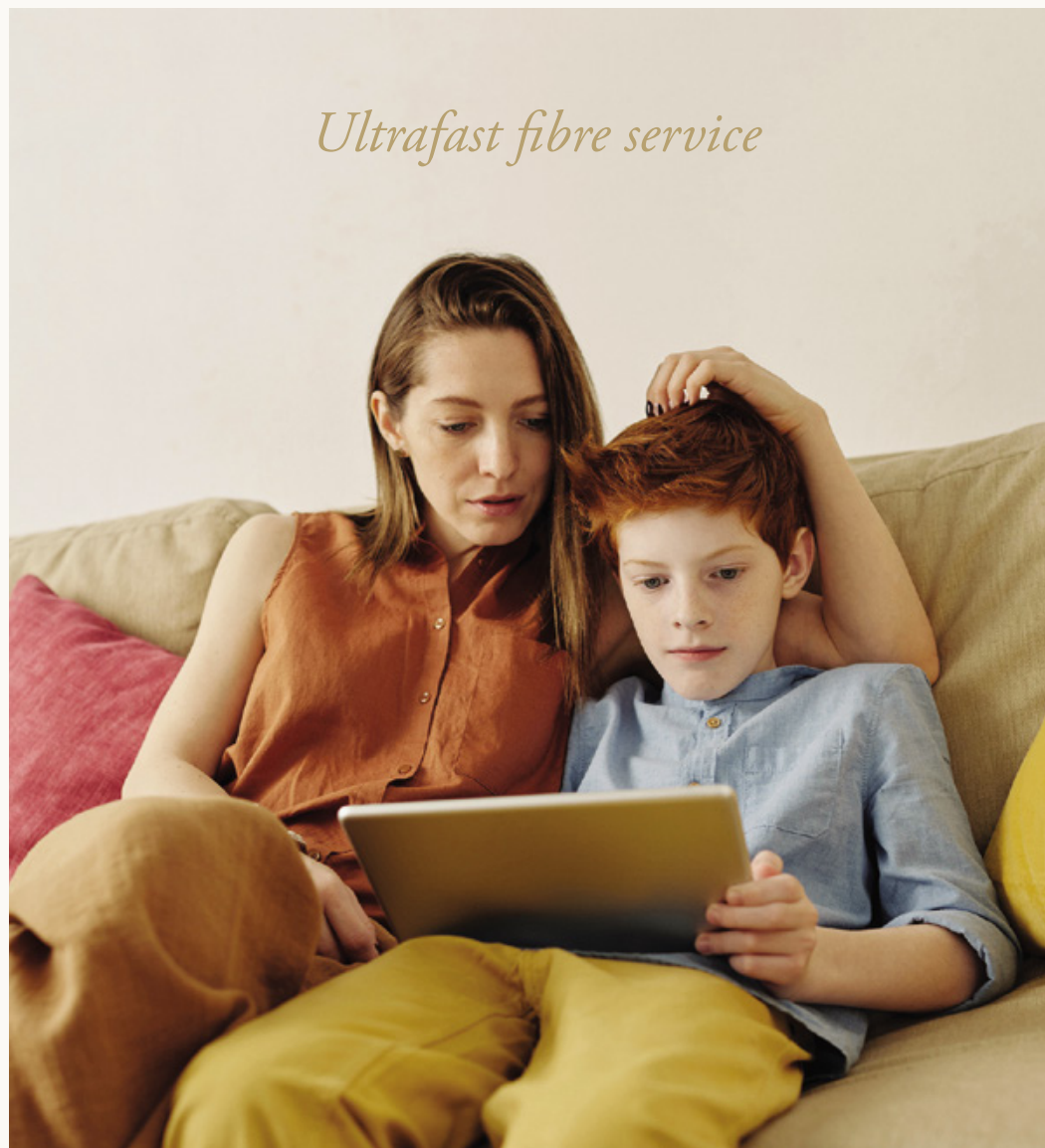
Stay connected at home

With fast broadband, everyone in the house can be online, keeping in touch with friends and family, working from home, watching Netflix, and doing the weekly shop, all at the same time.

Alderton benefits from fibre enabled broadband. The village also falls under Fastershire, which is a partnership between Herefordshire Council and Gloucestershire County Council, that is bringing even faster broadband to the two counties. This means you can upgrade to ultrafast fibre through your provider and access broadband speeds of up to 1,000Mbps.

Space to work from home

Whether it's a downstairs study, upstairs study, spare room converted into a home office, or a dedicated corner of a spacious open plan layout, we have a wide range of designs to suit your work from home style. Better still, inspire productivity and put your own stamp on your work-friendly space.



Ultrafast fibre service

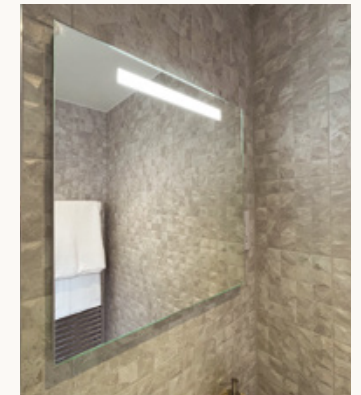
YOUR FREEMAN CHOICE

Once you have chosen your Freeman Home, it's time to personalise it and make it your own. We have spent a lot of time talking to our customers, sourcing items and researching ideas to create the perfect specification.

Our customers tell us they want to choose colours, finishes and add personal touches to make their home truly individual.

You may have some ideas about what you want, or perhaps you are looking for some inspiration. The Freeman Choice helps you personalise your property and ensure it feels like home from the moment you step inside.

*Create your perfect home
at Daylestone Park*



LOCAL VILLAGE MARKETS FULL
OF LOCALLY GROWN PRODUCE



5 BEDROOMS



218.3 sqm - 2,349 sqft

PAGE 17



215.3 sqm - 2,317 sqft

PAGE 21

4 BEDROOMS



165 sqm - 1,778 sqft

PAGE 27



158 sqm - 1,702 sqft

PAGE 29



149 sqm - 1,600 sqft

PAGE 31



130 sqm - 1,396 sqft

PAGE 33



129 sqm - 1,390 sqft

PAGE 35



118 sqm - 1,272 sqft

PAGE 39

3 BEDROOMS



195 sqm - 2,097 sqft

PAGE 23



101 sqm - 1,090sqft

PAGE 41

2 BEDROOMS



80 sqm - 861 sqft

PAGE 45



DAYLESTONE PARK

ENJOY
FIRST-CHOICE
SELECTION

Reserve your property
off plan today



Scan me to register
your interest

01594 543354

alderton@freemanhomes.co.uk

www.freemanhomes.co.uk

These particulars are set out as a general outline for guidance only. The information in this brochure does not in any way form part of a contract or warranty. Details may be subject to change.



NORTH



THE ATWOOD

218 sqm / 2,349 sqft

SPECIFICATION OVERVIEW

- Exceptionally spacious, detached five-bedroom property
- Energy-efficient, EPC A-rated home
- Sleek roof-integrated Viridian Solar PV panels, 5kW storage battery and market leading NIBE Air Source Heat Pump
- Large, beautifully designed kitchen with NEFF appliances
- French doors from kitchen to patio
- Utility with sink and external door
- Dual aspect living room with sliding doors to patio
- Separate dining room and a dual aspect study
- Spacious entrance hall
- Family bathroom with separate shower
- En suites to bedroom 1 & 2
- Fitted wardrobes with sliding doors to bedrooms 1, 2 & 3
- Self-contained above-garage annex
- Double garage with driveway parking for three cars
- Project EV electric car charging point
- Generous private garden
- Large oak porch
- Countryside views
- Fronts onto landscaped green open space
- Premium position at Daylestone Park

THE ATWOOD KEY FEATURES



5 BEDROOMS



TRADITIONAL LAYOUT



FAMILY BATHROOM



2 EN SUITE



FITTED WARDROBES



DOUBLE GARAGE ANNEX



UTILITY



HOME WORKING



ZERO CARBON LIVING



VIEWS



36 Bekstone in Cotswold Golden Buff




PLOT

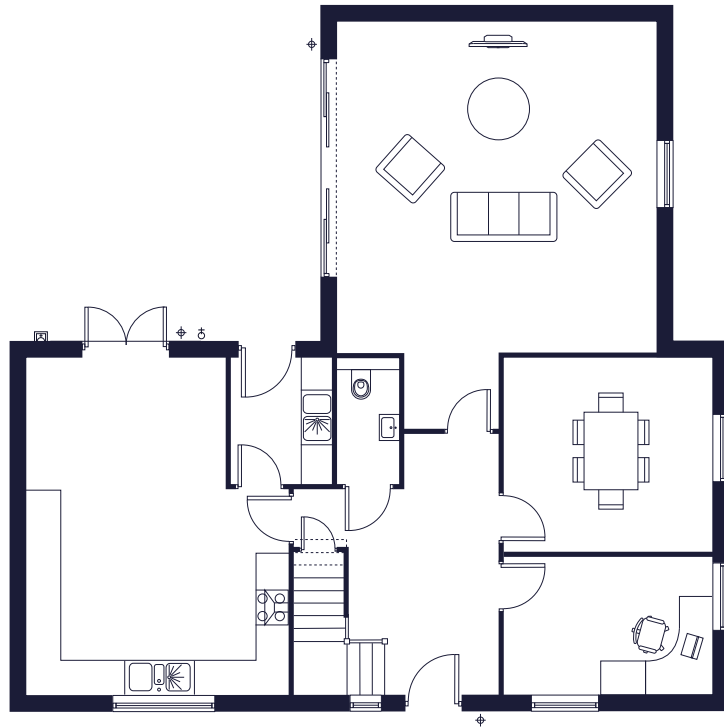
36

All measurements are approximate and may vary on site. CGIs and floor plans are indicative only and are subject to change. Please refer to the sales advisor for specific details as layout may be mirrored on individual plots.

THE ATWOOD

218 sqm / 2,349 sqft

-  Exterior Socket
-  Light
-  Tap



GROUND FLOOR



FIRST FLOOR

PLOT

36

Kitchen	6.07m x 4.73m	19' 11" x 15' 6"
Dining Room	3.51m x 3.76m	11' 6" x 12' 4"
Living Room	5.99m x 5.73m	19' 8" x 18' 10"
Utility	2.27m x 1.87m	7' 5" x 6' 2"
Study	2.47m x 3.77m	8' 1" x 12' 4"

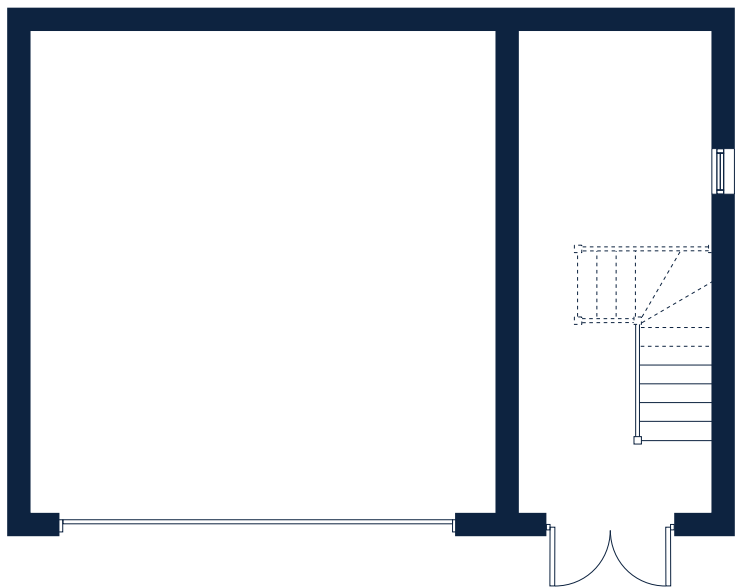
Bedroom 1	4.96m x 5.73m	16' 3" x 18' 10"
Bedroom 2	2.96m x 4.36m	9' 9" x 14' 4"
Bedroom 3	2.97m x 4.73m	9' 9" x 15' 6"
Bedroom 4	3.02m x 4.02m	9' 11" x 13' 2"
Bedroom 5	3.02m x 3.59m	9' 11" x 11' 9"



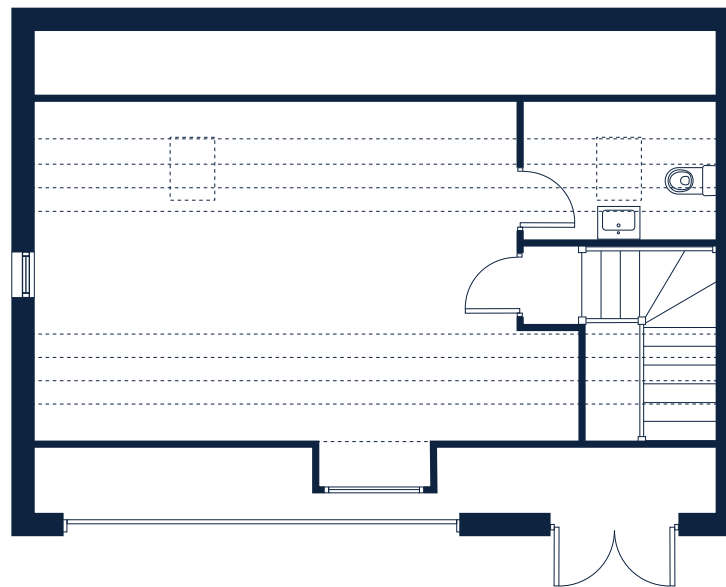
Detached Double Garage
49.43 sqm / 532 sqft

THE ATWOOD

DOUBLE GARAGE WITH ANNEX



GROUND FLOOR



FIRST FLOOR

PLOT

36

Garage parking 5.80m x 6.01m 19' 3" x 19' 7"
Access and Store 2.4m x 6.01m 7' 9" x 19' 7"

Annex 6.01m x 4.22m 19' 7" x 13' 10"

FreemanHomes

HOMES DESIGNED WITH
YOU IN MIND



Zero ZERO
CARBON
LIVING



DAYLESTONE PARK

DAYLESTONE PARK | 20

THE HARWOOD

215 sqm / 2,317 sqft

SPECIFICATION OVERVIEW

- Exceptionally spacious, detached five-bedroom property
- Energy-efficient, EPC A-rated home
- Sleek roof-integrated Viridian Solar PV panels, 5kW storage battery and market leading NIBE Air Source Heat Pump
- Large, beautifully designed kitchen with NEFF appliances
- Kitchen island with breakfast bar
- Pantry with shelving
- French doors from kitchen to patio
- Utility with sink and external door
- Dual aspect living room
- Separate dining room with connecting doors for a layout that flows
- Separate study
- Spacious entrance hall and upstairs landing
- Family bathroom with separate shower
- En suites to bedroom 1 & 2
- Fitted wardrobes with sliding doors to bedrooms 1, 2 & 4
- Double garage with driveway parking for three cars
- Project EV electric car charging point
- Generous private garden
- Bespoke lean-to oak porch
- Countryside views
- Fronts onto landscaped green open space
- Premium position at Daylestone Park

THE HARWOOD KEY FEATURES



5 BEDROOMS



TRADITIONAL LAYOUT



FAMILY BATHROOM



2 EN SUITE



FITTED WARDROBES



PANTRY



UTILITY



HOME WORKING



DOUBLE GARAGE



ZERO CARBON LIVING



VIEWS



38 Bekstone in Cotswold Golden Buff




PLOT

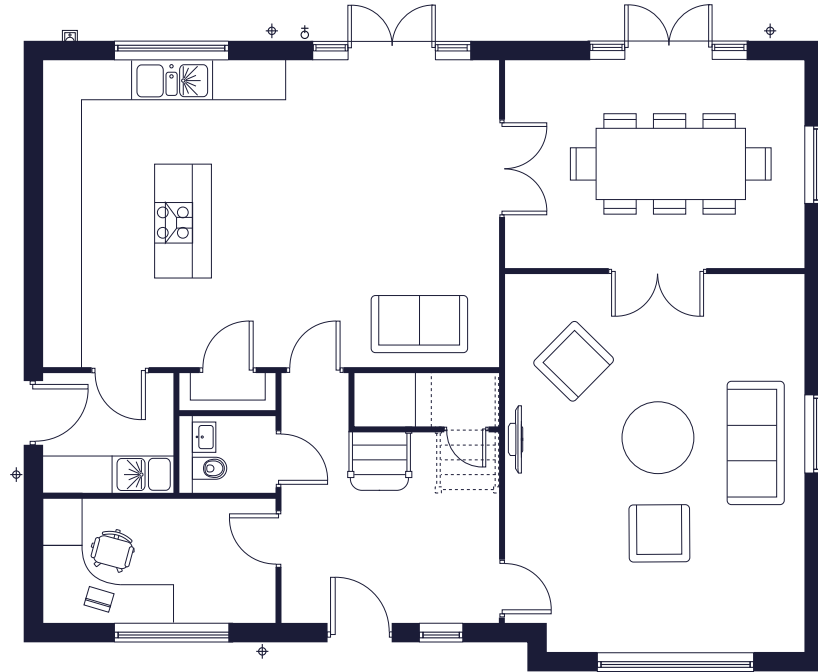
38

All measurements are approximate and may vary on site. CGIs and floor plans are indicative only and are subject to change. Please refer to the sales advisor for specific details as layout may be mirrored on individual plots.

THE HARWOOD

215 sqm / 2,317 sqft

-  Exterior Socket
-  Light
-  Tap



GROUND FLOOR



FIRST FLOOR

PLOT

38

Living Room	5.97m x 4.73m	19' 7" x 15' 6"
Kitchen	4.58m x 4.26m	15' 0" x 14' 0"
Dining Room	3.27m x 4.73m	10' 9" x 15' 6"
Family Room	4.86m x 2.95m	15' 11" x 9' 8"
Utility	1.90m x 2.06m	6' 2" x 6' 9"
Pantry	0.60m x 1.52m	2' x 5'
Study	1.96m x 3.67m	6' 5" x 12' 0"

Bedroom 1	4.29m x 3.40m	14' 1" x 11' 2"
Bedroom 2	3.96m x 3.76m	13' 0" x 12' 4"
Bedroom 3	2.77m x 3.76m	9' 1" x 12' 4"
Bedroom 4	2.77m x 3.75m	9' 1" x 12' 4"
Bedroom 5	4.86m x 2.60m	15' 11" x 8' 6"



Detached Double Garage
39.15 sqm / 421.4 sqft

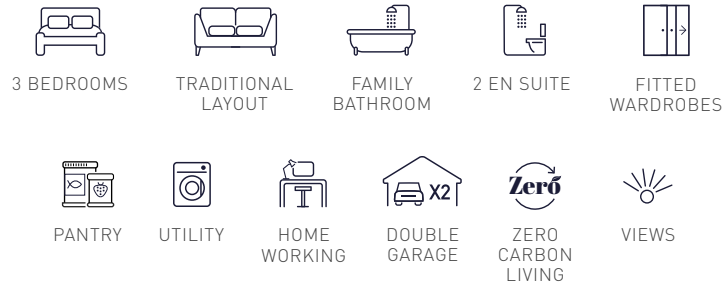
THE PORTER

195 sqm / 2,097 sqft

SPECIFICATION OVERVIEW

- Exceptionally spacious, detached three-bedroom property
- Energy-efficient, EPC A-rated home
- Sleek roof-integrated Viridian Solar PV panels, 5kW storage battery and market leading NIBE Air Source Heat Pump
- Incredibly light and spacious, open plan kitchen/dining area with NEFF appliances
- Chic kitchen island with breakfast bar
- Pantry with shelving
- Two sets of French doors from kitchen/dining room to patio
- Large utility with sink and good storage area
- Dual aspect living room with French doors
- Convenient study location
- Separate family bathroom
- En suites to bedroom 1 & 2
- Fitted wardrobes to all bedrooms
- Double garage with driveway parking for three cars
- Project EV electric car charging point
- Generous private garden
- Oak porch
- Countryside views from a private corner
- Fronts onto landscaped green open space
- Premium positions at Daylestone Park

THE PORTER KEY FEATURES






PLOTS

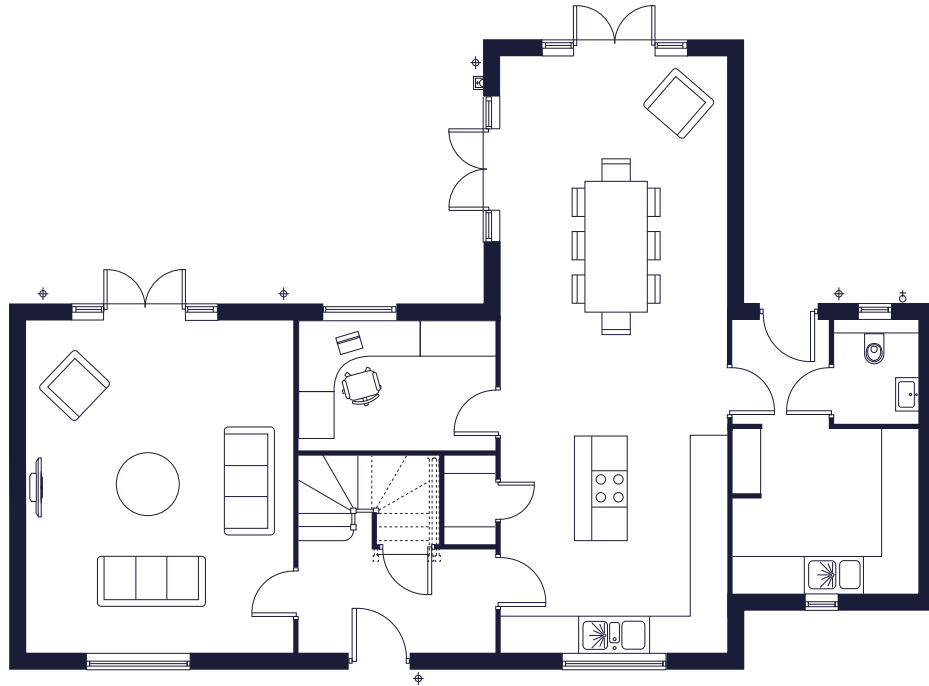


All measurements are approximate and may vary on site. CGIs and floor plans are indicative only and are subject to change. Please refer to the sales advisor for specific details as layout may be mirrored on individual plots.

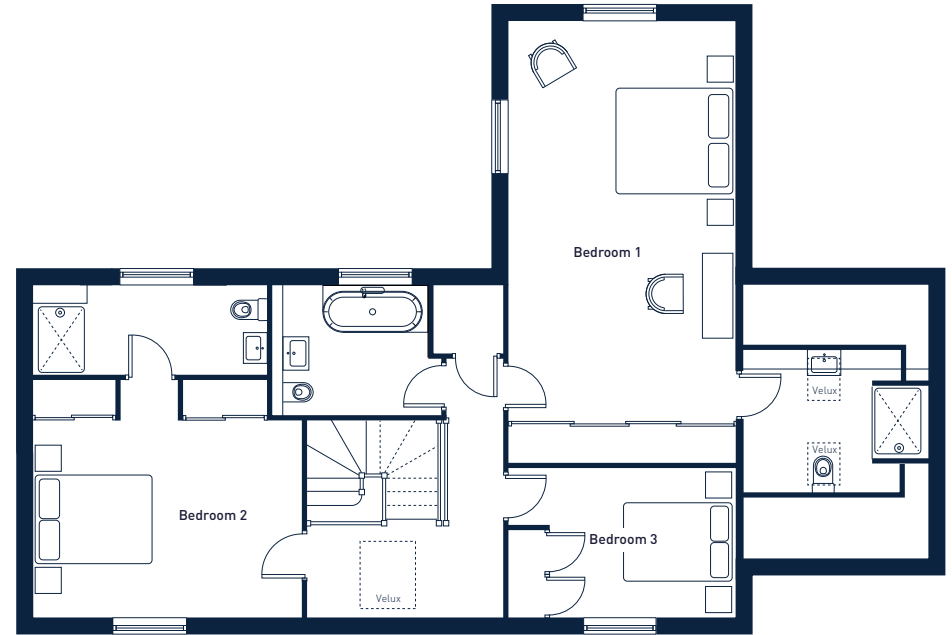
THE PORTER

195 sqm / 2,097 sqft

-  Exterior Socket
-  Light
-  Tap



GROUND FLOOR



FIRST FLOOR

PLOT

29

Living Room	5.62m x 4.56m	18' 5" x 15' 0"
Kitchen/Dining Room	10.12m x 3.82m	33' 3" x 12' 7"
Utility	2.79m x 3.07m	9' 2" x 10' 1"
Pantry	1.52m x 0.88m	5' 0" x 2' 11"
Study	2.20m x 3.36m	7' 3" x 11' 0"

Bedroom 1	7.49m x 3.82m	24' 7" x 12' 6"
Bedroom 2	4.03m x 4.56m	13' 3" x 15' 0"
Bedroom 3	2.54m x 3.82m	8' 4" x 12' 6"



Detached Double Garage
39.15 sqm / 421.4 sqft






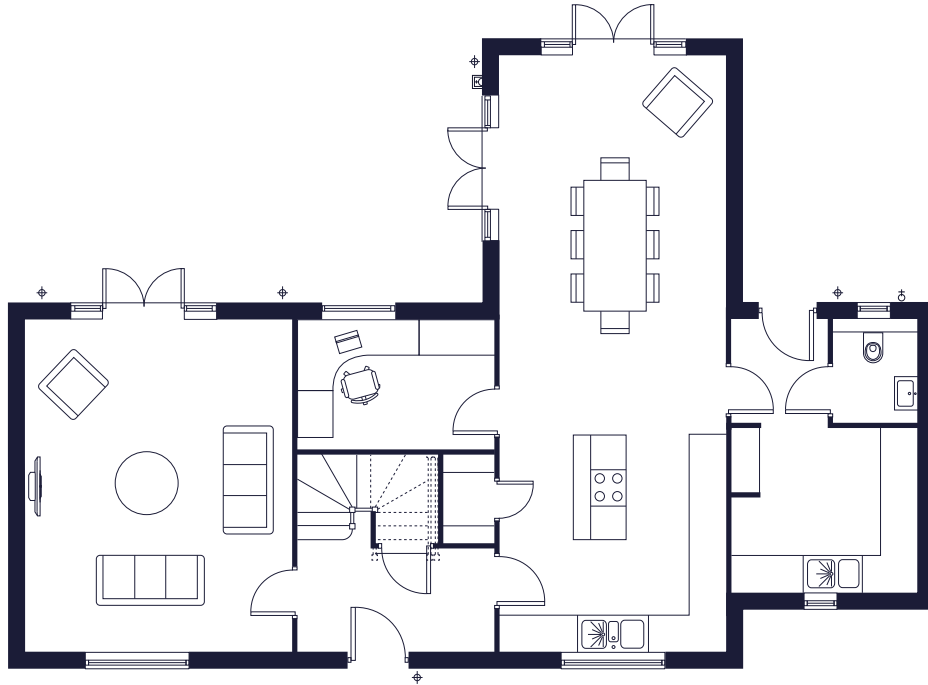
30 Earth Taupe roughcast render over Bekstone plinth in Cotswold Golden Buff

All measurements are approximate and may vary on site. CGI's are of a similar property previously built. Floor plans are indicative only and are subject to change.

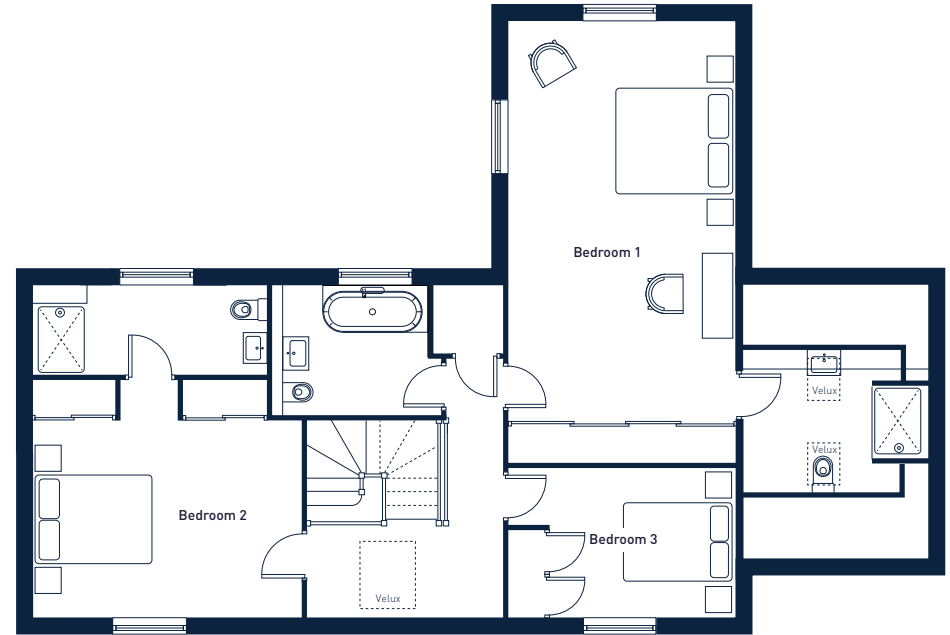
THE PORTER

195 sqm / 2,097 sqft

-  Exterior Socket
-  Light
-  Tap



GROUND FLOOR



FIRST FLOOR

PLOT

30

Living Room	5.62m x 4.56m	18' 5" x 15' 0"
Kitchen/Dining Room	10.12m x 3.82m	33' 3" x 12' 7"
Utility	2.79m x 3.07m	9' 2" x 10' 1"
Pantry	1.52m x 0.88m	5' 0" x 2' 11"
Study	2.20m x 3.36m	7' 3" x 11' 0"

Bedroom 1	7.49m x 3.82m	24' 7" x 12' 6"
Bedroom 2	4.03m x 4.56m	13' 3" x 15' 0"
Bedroom 3	2.54m x 3.82m	8' 4" x 12' 6"



Detached Double Garage
39.15 sqm / 421.4 sqft



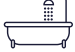






THE YEAT

165 sqm / 1,778 sqft

SPECIFICATION OVERVIEW

- Exceptionally spacious, detached four-bedroom property
- Energy-efficient, EPC A-rated home
- Sleek roof-integrated Viridian Solar PV panels, 5kW storage battery and market leading NIBE Air Source Heat Pump
- Light and spacious, triple aspect kitchen with NEFF appliances
- French doors from kitchen to patio
- Utility with sink and external door
- Generous, triple aspect living room with French doors to patio
- Separate dining room
- Family bathroom with separate shower
- En suites to bedroom 1 & 2
- Fitted wardrobes to bedrooms 1, 2 & 3
- Garage with additional off-road parking
- Project EV electric car charging point
- Oak porch
- Private garden

THE YEAT KEY FEATURES

 4 BEDROOMS	 TRADITIONAL LAYOUT	 FAMILY BATHROOM	 2 EN SUITE
 FITTED WARDROBES	 UTILITY	 DOUBLE GARAGE	 ZERO CARBON LIVING
			 VIEWS






32 Bekstone in Cotswold Golden Buff (Plot 3 exterior finish as above)

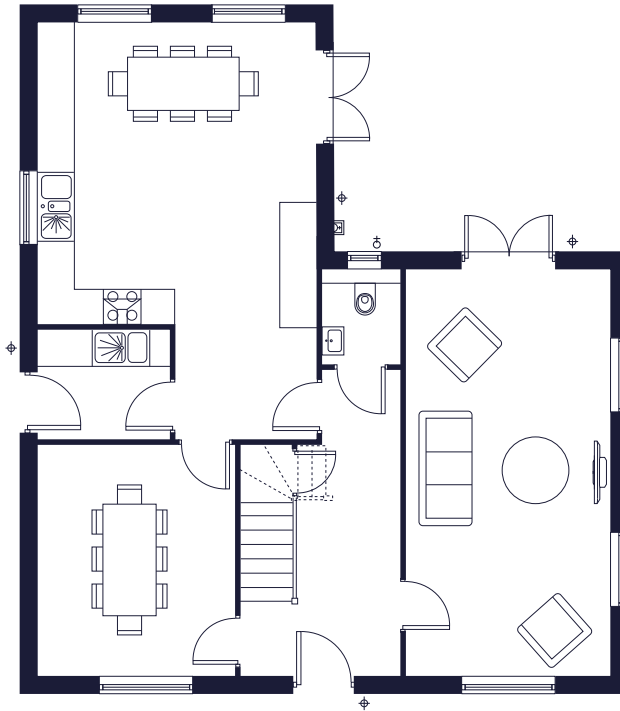
PLOTS



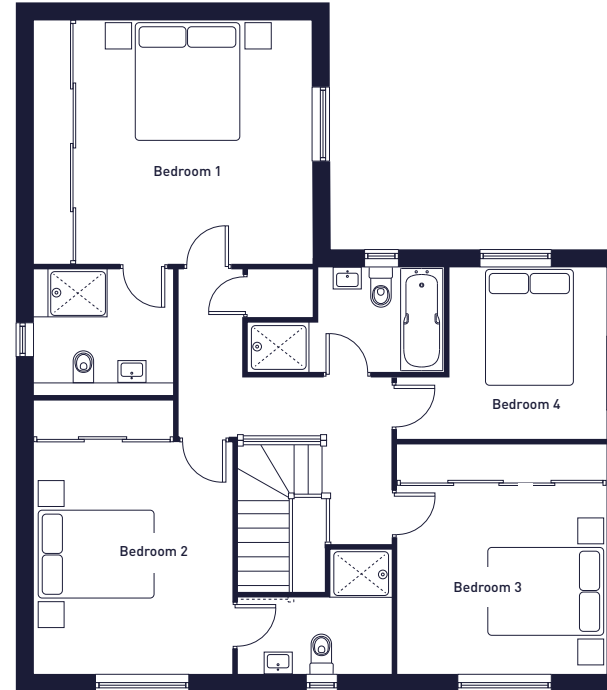
THE YEAT

165 sqm / 1,778 sqft

-  Exterior Socket
-  Light
-  Tap



GROUND FLOOR



FIRST FLOOR

PLOTS

3 32

Living Room	6.74m x 3.42m	22' 1" x 11' 3"
Kitchen	5.04m x 4.63m	16' 6" x 15' 2"
Dining Room	3.85m x 3.30m	12' 8" x 10' 10"
Utility	1.83m x 2.20m	6' 0" x 7' 3"

Bedroom 1	4.06m x 4.61m	13' 4" x 15' 2"
Bedroom 2	4.59m x 3.30m	15' 1" x 10' 10"
Bedroom 3	3.81m x 3.51m	12' 6" x 11' 6"
Bedroom 4	2.85m x 2.64m	9' 4" x 8' 8"



Detached Double Garage

39.15 sqm / 421.4 sqft

Single Garage - Plot 3











THE BLAKE

158 sqm / 1,702 sqft

SPECIFICATION OVERVIEW

- Exceptionally spacious, detached four-bedroom property
- Energy-efficient, EPC A-rated home
- Sleek roof-integrated Viridian Solar PV panels, 5kW storage battery and market leading NIBE Air Source Heat Pump
- Light and spacious kitchen with NEFF appliances
- Sit-up breakfast bar
- French doors from kitchen/dining area to patio
- Utility with sink and external door
- Spacious, double aspect living room with French doors to patio
- Separate dual aspect study
- Open gallery landing
- Family bathroom
- En suites to bedroom 1 & 2
- Fitted wardrobes with sliding doors to bedrooms 1, 2 & 3
- Double garage with driveway parking for three cars
- Project EV electric car charging point
- Oak porch
- Private garden
- Premium and statement positions at Daylestone Park

THE BLAKE KEY FEATURES

 4 BEDROOMS	 TRADITIONAL LAYOUT	 FAMILY BATHROOM	 2 EN SUITE	 FITTED WARDROBES
 UTILITY	 HOME WORKING	 DOUBLE GARAGE	 ZERO CARBON LIVING	 VIEWS






PLOTS

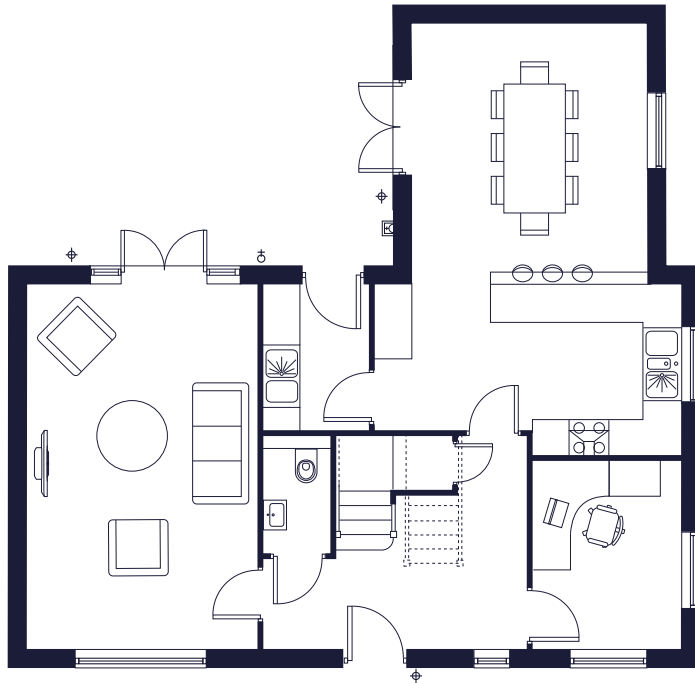
25 37

All measurements are approximate and may vary on site. CGIs and floor plans are indicative only and are subject to change. Please refer to the sales advisor for specific details as layout may be mirrored on individual plots.

THE BLAKE

158 sqm / 1,702 sqft

-  Exterior Socket
-  Light
-  Tap

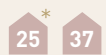


GROUND FLOOR



FIRST FLOOR

LOTS



HANDED*

Living Room	5.96m x 3.76m	19' 7" x 12' 4"
Kitchen	2.39m x 5.01m	7' 10" x 16' 5"
Dining Room	4.28m x 3.82m	14' 1" x 12' 6"
Utility	2.39m x 1.73m	7' 10" x 5' 8"
Study	3.08m x 2.43m	10' 1" x 7' 11"

Bedroom 1	3.26m x 3.82m	10' 8" x 12' 6"
Bedroom 2	3.76m x 4.08m	12' 4" x 13' 5"
Bedroom 3	2.68m x 3.47m	8' 10" x 11' 5"
Bedroom 4	2.10m x 4.08m	6' 11" x 13' 5"



Detached Double Garage
39.15 sqm / 421.4 sqft








THE STEINBECK

149 sqm / 1,600 sqft

SPECIFICATION OVERVIEW

- Spacious, detached four-bedroom property mixing open plan and traditional layouts
- Energy-efficient, EPC A-rated home
- Sleek roof-integrated Viridian Solar PV panels, 5kW storage battery and market leading NIBE Air Source Heat Pump
- Spacious, open plan triple aspect kitchen/dining area with NEFF appliances
- Sit-up breakfast bar
- Utility with sink and external door
- Separate living room with French doors to patio
- Separate generous study
- Family bathroom with separate shower
- En suite to master bedroom
- Fitted wardrobes with sliding doors to bedrooms 1, 2 & 3
- Double garage with driveway parking for three cars
- Project EV electric car charging point
- Private garden
- Premium positions at Daylestone Park
- Front onto landscaped green open space

THE STEINBECK KEY FEATURES

 4 BEDROOMS	 TRADITIONAL LAYOUT	 FAMILY BATHROOM	 EN SUITE	 FITTED WARDROBES
 UTILITY	 HOME WORKING	 DOUBLE GARAGE	 ZERO CARBON LIVING	 VIEWS



26 Bekstone in Cotswold Golden Buff (Plot 27 exterior finish as above)




PLOTS

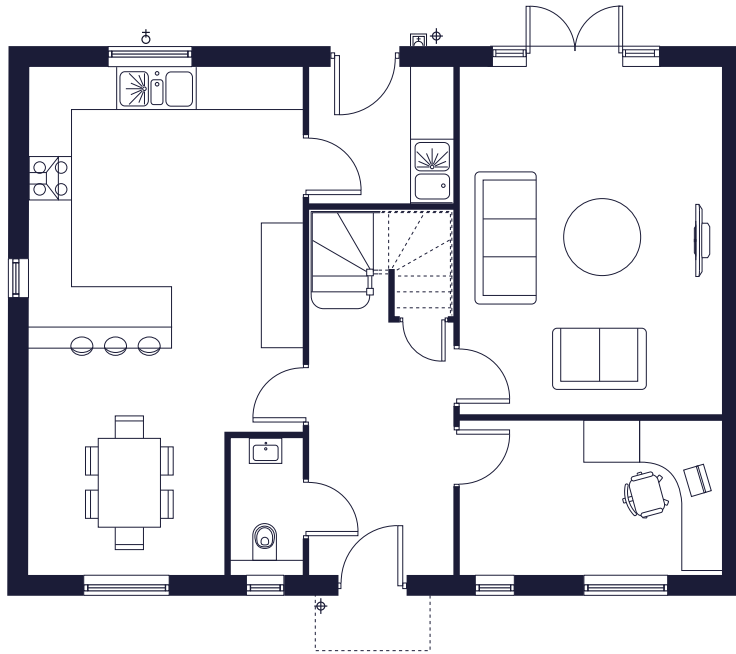


All measurements are approximate and may vary on site. CGIs and floor plans are indicative only and are subject to change. Please refer to the sales advisor for specific details as layout may be mirrored on individual plots.

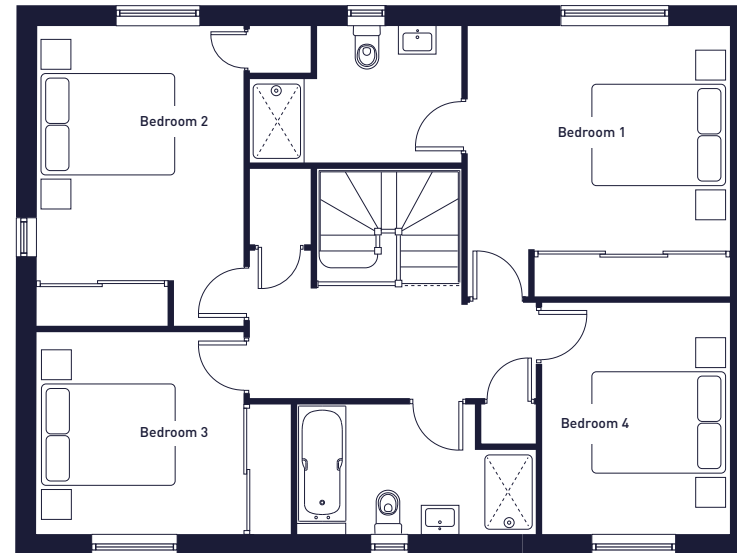
THE STEINBECK

149 sqm / 1,600 sqft

-  Exterior Socket
-  Light
-  Tap



GROUND FLOOR



FIRST FLOOR

PLOTS

26 27

Living Room	5.08m x 3.84m	16' 8" x 12' 7"
Kitchen	5.33m x 3.98m	17' 6" x 13' 1"
Dining Room	2.09m x 2.84m	6' 10" x 9' 4"
Utility	2.00m x 2.12m	6' 7" x 6' 11"
Study	2.25m x 3.84m	7' 5" x 12' 7"

Bedroom 1	3.95m x 3.83m	12' 11" x 12' 7"
Bedroom 2	4.38m x 3.01m	14' 4" x 9' 11"
Bedroom 3	2.95m x 3.06m	9' 8" x 10' 0"
Bedroom 4	3.43m x 2.75m	11' 3" x 9' 0"



Detached Double Garage
39.15 sqm / 421.4 sqft

THE NESBIT

130 sqm / 1,396 sqft

SPECIFICATION OVERVIEW

- Spacious, four-bedroom property (detached & link detached)
- Energy-efficient, EPC A-rated home
- Sleek roof-integrated Viridian Solar PV panels, 5kW storage battery and market leading NIBE Air Source Heat Pump
- Spacious, dual-aspect open plan kitchen/dining area with NEFF appliances
- Utility with sink and external door
- Triple-aspect living room with French doors to patio
- Family bathroom
- En suite to master bedroom
- Fitted wardrobes with sliding doors to bedrooms 1, 2 & 3
- Garage with driveway parking for additional two cars
- Project EV electric car charging point
- Private garden
- Premium and statement positions at Daylestone Park

THE NESBIT KEY FEATURES



4 BEDROOMS



TRADITIONAL LAYOUT



FAMILY BATHROOM



EN SUITE



FITTED WARDROBES



UTILITY



DOUBLE GARAGE ROOM/ANNEX, PLOT 2



ZERO CARBON LIVING



VIEWS






31 Bekstone in Cotswold Golden Buff (Plot 2 exterior finish as above)

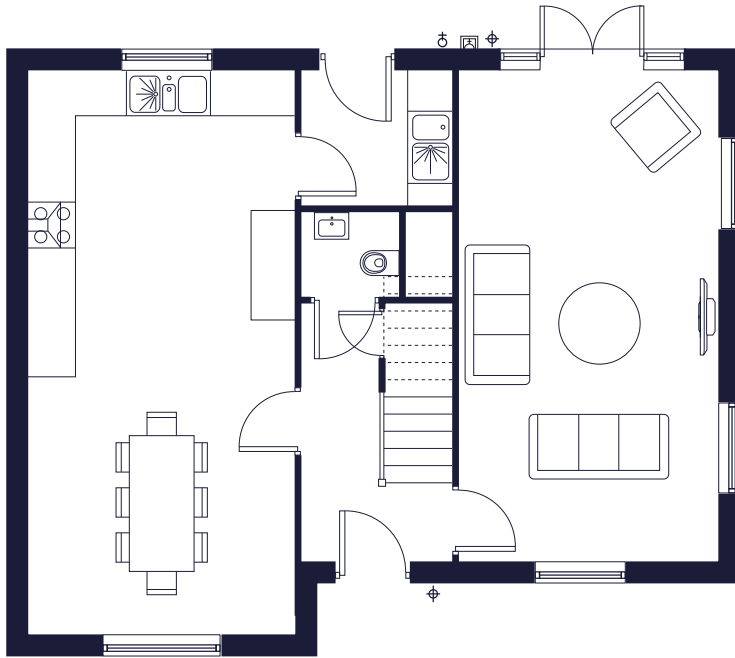
PLOTS



THE NESBIT

130 sqm / 1,396 sqft

-  Exterior Socket
-  Light
-  Tap



GROUND FLOOR



FIRST FLOOR

PLOTS



HANDED*

Living Room	6.63m x 3.51m	21' 9" x 11' 6"
Kitchen/Dining Room	7.65m x 3.60m	25' 1" x 11' 10"
Utility	1.81m x 2.05m	5' 11" x 6' 9"
Room above garage (Plot 2)	4.27m x 4.10m	14' 0" x 13' 4"

Bedroom 1	3.65m x 3.51m	11' 11" x 11' 6"
Bedroom 2	3.59m x 3.51m	11' 9" x 11' 6"
Bedroom 3	2.71m x 3.60m	8' 11" x 11' 10"
Bedroom 4	2.52m x 3.29m	8' 3" x 10' 10"



Conjoined Double Garage
37.50 sqm / 403.6 sqft

Single Garage - Plot 31

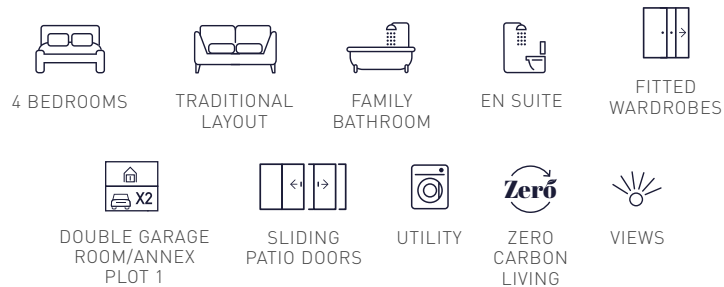
THE LEAR

129 sqm / 1,390 sqft

SPECIFICATION OVERVIEW

- Spacious, four-bedroom property (detached & link detached)
- Energy-efficient, EPC A-rated home
- Sleek roof-integrated Viridian Solar PV panels, 5kW storage battery and market leading NIBE Air Source Heat Pump
- Open plan kitchen/dining area with NEFF appliances and glazed sliding doors that welcome in reams of natural light
- Utility with sink and external door
- Separate living room
- Family bathroom
- En suite to master bedroom
- Fitted wardrobes with sliding doors to bedrooms 1 & 2
- Garage with driveway parking for additional two cars
- Project EV electric car charging point
- Private garden
- Premium and statement positions at Daylestone Park

THE LEAR KEY FEATURES






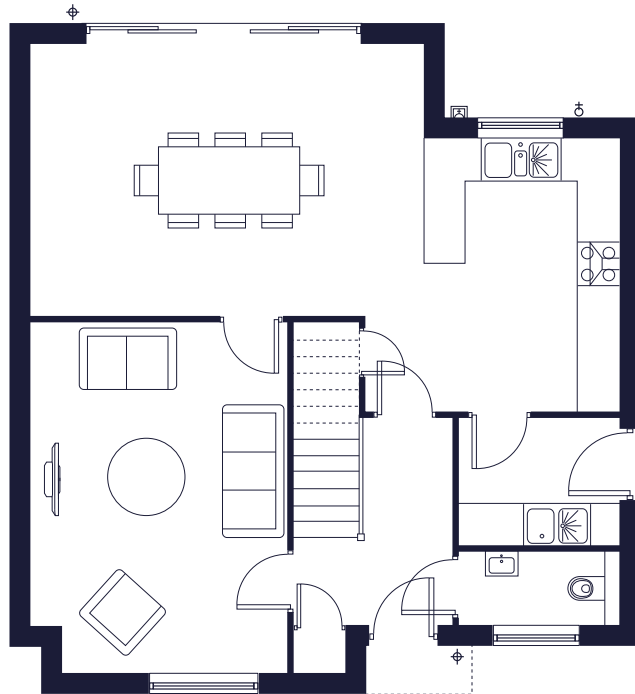
PLOTS



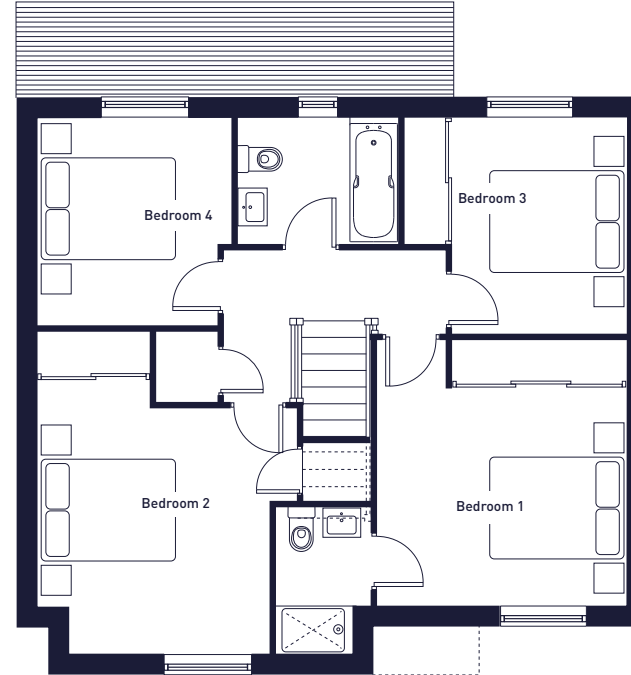
THE LEAR

129 sqm / 1,390 sqft

-  Exterior Socket
-  Light
-  Tap



GROUND FLOOR



FIRST FLOOR

PLOTS



Living Room	5.01m x 3.69m	16' 5" x 12' 2"
Kitchen	3.91m x 2.81m	12' 10" x 9' 3"
Dining Room	3.90m x 5.62m	12' 10" x 18' 5"
Utility	1.84m x 2.30m	6' 0" x 7' 7"
Room above garage (Plot1)	4.27m x 4.10m	14' 0" x 13' 4"

Bedroom 1	3.80m x 3.59m	12' 6" x 11' 9"
Bedroom 2	3.50m x 3.31m	11' 6" x 10' 10"
Bedroom 3	3.08m x 2.50m	10' 1" x 8' 2"
Bedroom 4	2.97m x 2.76m	9' 9" x 9' 1"



Conjoined Double Garage - Plot 1
37.50 sqm / 403.6 sqft

Single Garage & Room/Annex, Plot 47
Single Garage, Plot 4






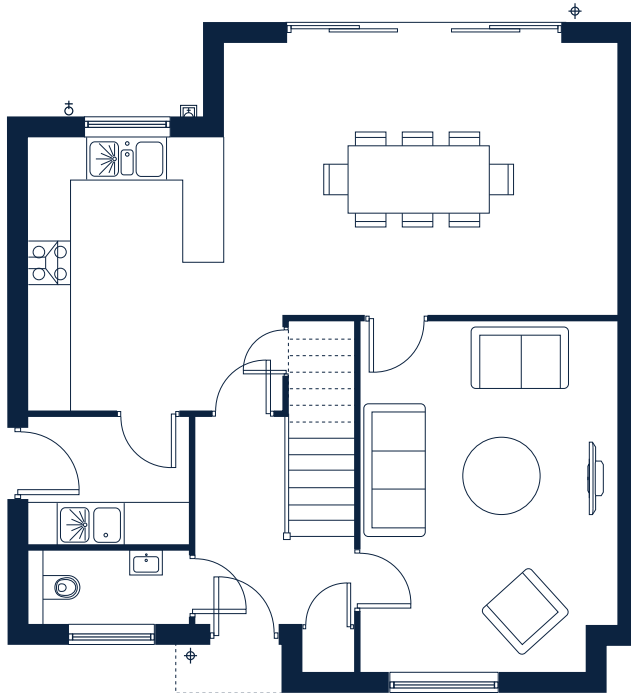
28 African Ivory roughcast render over Bekstone plinth in Cotswold Golden Buff (Plot 4 exterior finish as above)

All measurements are approximate and may vary on site. CGI's are of a similar property previously built. Floor plans are indicative only and are subject to change.

THE LEAR

129 sqm / 1,390 sqft

-  Exterior Socket
-  Light
-  Tap



GROUND FLOOR



FIRST FLOOR

PLOT

28*

HANDED*

Living Room	5.01m x 3.69m	16' 5" x 12' 2"
Kitchen	3.91m x 2.81m	12' 10" x 9' 3"
Dining Room	3.90m x 5.62m	12' 10" x 18' 5"
Utility	1.84m x 2.30m	6' 0" x 7' 7"

Bedroom 1	3.80m x 3.59m	12' 6" x 11' 9"
Bedroom 2	3.50m x 3.31m	11' 6" x 10' 10"
Bedroom 3	3.08m x 2.50m	10' 1" x 8' 2"
Bedroom 4	2.97m x 2.76m	9' 9" x 9' 1"



Single Garage
37.50 sqm / 403.6 sqft

Single Garage - Plot 28

THE HUGHES

118 sqm / 1,272 sqft

SPECIFICATION OVERVIEW

- Spacious, detached four-bedroom property
- Energy-efficient, EPC A-rated home
- Sleek roof-integrated Viridian Solar PV panels, 5kW storage battery and market leading NIBE Air Source Heat Pump
- Traditional kitchen layout modernly designed with NEFF appliances
- Utility with sink and external door
- Separate dining room connected to dual-aspect living room, both with French doors onto patio
- Separate study
- Family bathroom
- En suite to master bedroom
- Fitted wardrobes with sliding doors to bedrooms 1, 2 & 3
- Single garage with driveway parking for additional two cars
- Project EV electric car charging point
- Stone entrance canopy
- Private garden

THE HUGHES KEY FEATURES



4 BEDROOMS



TRADITIONAL LAYOUT



FAMILY BATHROOM



EN SUITE



FITTED WARDROBES



UTILITY



HOME WORKING



SINGLE GARAGE



ZERO CARBON LIVING



46 African Ivory roughcast render over Bekstone plinth in Cotswold Golden Buff (Plot 35 exterior finish as above)




PLOTS

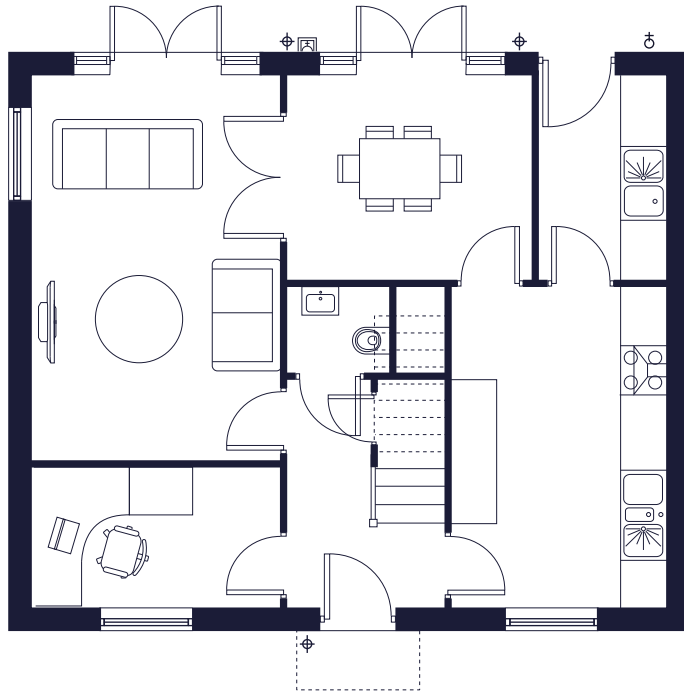


All measurements are approximate and may vary on site. CGIs and floor plans are indicative only and are subject to change. Please refer to the sales advisor for specific details as layout may be mirrored on individual plots.

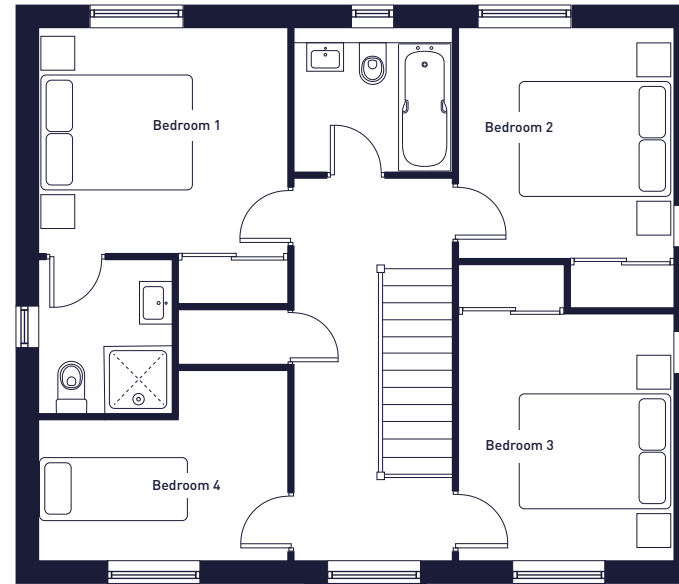
THE HUGHES

118 sqm / 1,272 sqft

-  Exterior Socket
-  Light
-  Tap



GROUND FLOOR



FIRST FLOOR

PLOTS

35 46

Living Room	5.14m x 3.31m	16' 10" x 10' 10"
Kitchen	4.25m x 2.85m	13' 11" x 9' 4"
Dining Room	2.74m x 3.25m	8' 11" x 10' 8"
Utility	2.74m x 1.69m	8' 11" x 5' 7"
Study	1.86m x 3.31m	6' 1" x 10' 10"

Bedroom 1	2.98m x 3.31m	9' 9" x 10' 10"
Bedroom 2	3.24m x 2.85m	10' 8" x 9' 4"
Bedroom 3	3.06m x 2.85m	10' 0" x 9' 4"
Bedroom 4	1.86m x 3.31m	6' 1" x 10' 10"



Single Garage
19 sqm / 204.5 sqft

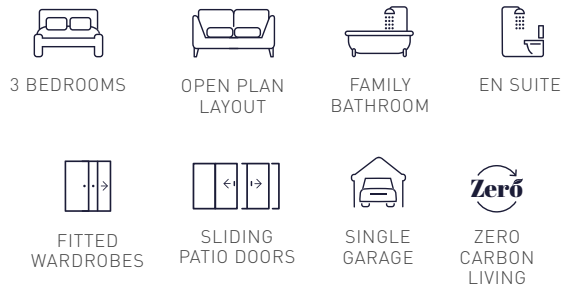
THE HARDY

101 sqm / 1,090 sqft

SPECIFICATION OVERVIEW

- Spacious, detached three-bedroom property
- Energy-efficient, EPC A-rated home
- Sleek roof-integrated Viridian Solar PV panels, 5kW storage battery and market leading NIBE Air Source Heat Pump
- Modern and spacious, open plan layout with glazed sliding doors for maximum natural light
- Fully fitted kitchen featuring NEFF appliances
- Family bathroom
- En suite to master bedroom
- Fitted wardrobes with sliding doors to bedrooms 1 & 2
- Single garage with driveway parking for additional two cars
- Project EV electric car charging point
- Stone entrance canopy*
- Private garden

THE HARDY KEY FEATURES



PLOTS






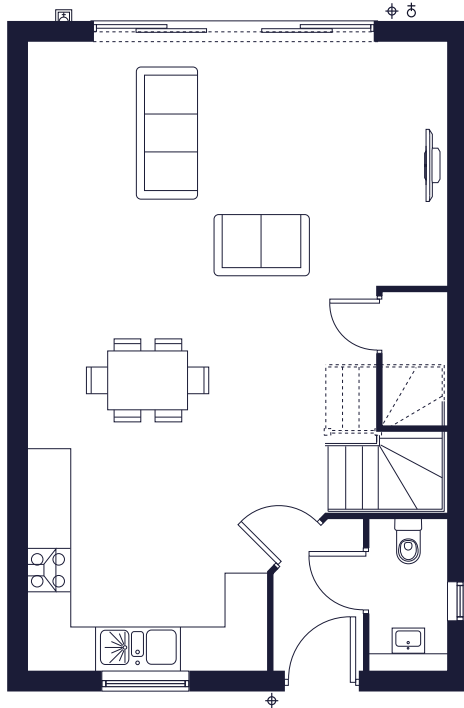
Plot 48 lean-to porch*

All measurements are approximate and may vary on site. CGIs and floor plans are indicative only and are subject to change. Please refer to the sales advisor for specific details as layout may be mirrored on individual plots.

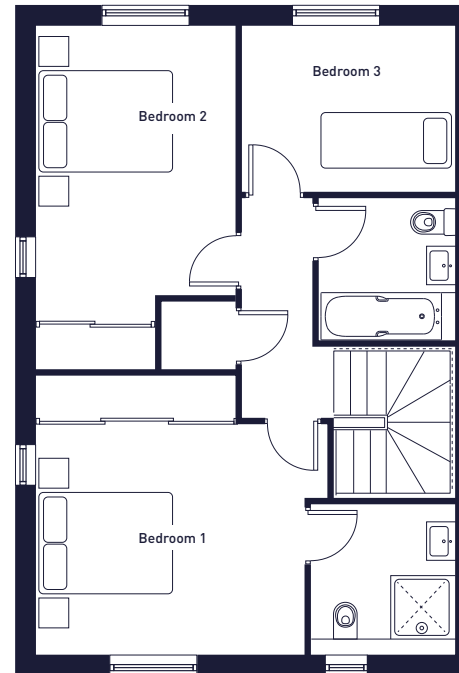
THE HARDY

101 sqm / 1,090 sqft

-  Exterior Socket
-  Light
-  Tap

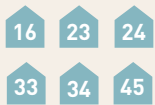


GROUND FLOOR



FIRST FLOOR

PLOTS



Living Area	3.40m x 5.85m	11' 2" x 19' 2"
Kitchen	2.14m x 3.41m	7' 0" x 11' 2"
Dining Area	3.20m x 4.86m	10' 6" x 15' 11"

Bedroom 1	4.14m x 3.74m	13' 7" x 12' 3"
Bedroom 2	3.60m x 2.79m	11' 10" x 9' 2"
Bedroom 3	2.30m x 3.00m	7' 7" x 9' 11"



Single Garage
19 sqm / 204.5 sqft






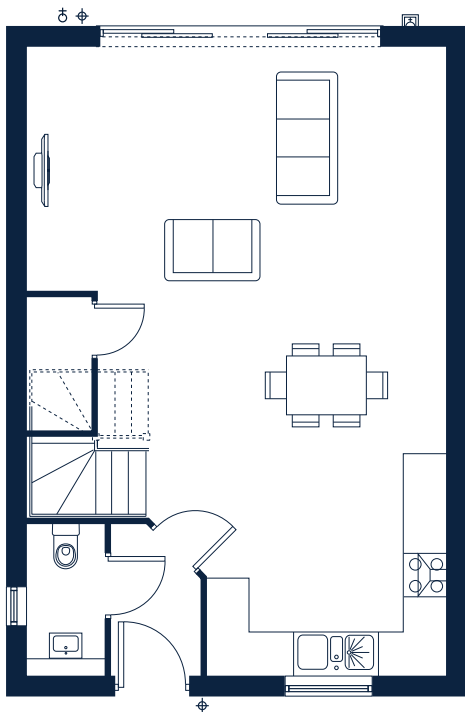
45 African Ivory roughcast render (Plots 33 & 34 exterior finish as above)

All measurements are approximate and may vary on site. CGI's are of a similar property previously built. Floor plans are indicative only and are subject to change.

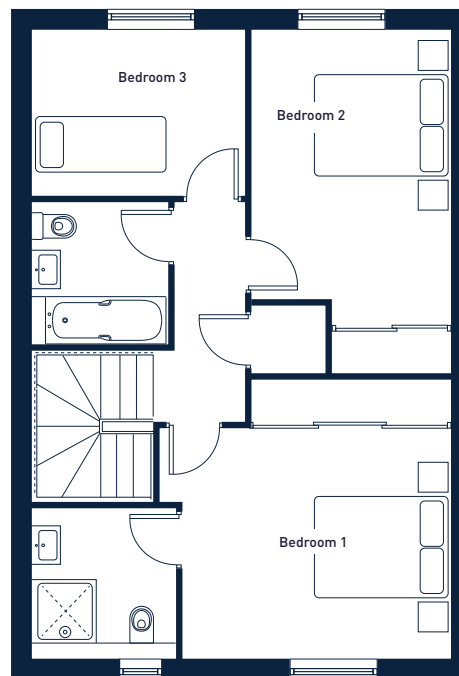
THE HARDY

101 sqm / 1,090 sqft

-  Exterior Socket
-  Light
-  Tap



GROUND FLOOR



FIRST FLOOR

PLOT

48

Living Area	3.40m x 5.85m	11' 2" x 19' 2"
Kitchen	2.14m x 3.41m	7' 0" x 11' 2"
Dining Area	3.20m x 4.86m	10' 6" x 15' 11"

Bedroom 1	4.14m x 3.74m	13' 7" x 12' 3"
Bedroom 2	3.60m x 2.79m	11' 10" x 9' 2"
Bedroom 3	2.30m x 3.00m	7' 7" x 9' 11"



Single Garage
19 sqm / 204.5 sqft








THE TENNYSON

80 sqm / 861 sqft

SPECIFICATION OVERVIEW

- Spacious, semi-detached two-bedroom property
- Energy-efficient, EPC A-rated home
- Sleek roof-integrated Viridian Solar PV panels, 5kW storage battery and market leading NIBE Air Source Heat Pump
- Modern, open plan layout
- Fully fitted kitchen featuring NEFF appliances
- En suites to both bedrooms
- Fitted wardrobes with sliding doors to both bedrooms
- Single garage with driveway parking for additional two cars
- Project EV electric car charging point
- Private garden

THE TENNYSON KEY FEATURES

 2 BEDROOMS	 OPEN PLAN LAYOUT	 FAMILY BATHROOM	 2 EN SUITE
 FITTED WARDROBES	 SINGLE GARAGE	 ZERO CARBON LIVING	 VIEWS



17 & 18, All plots Bekstone in Cotswold Golden Buff




PLOTS

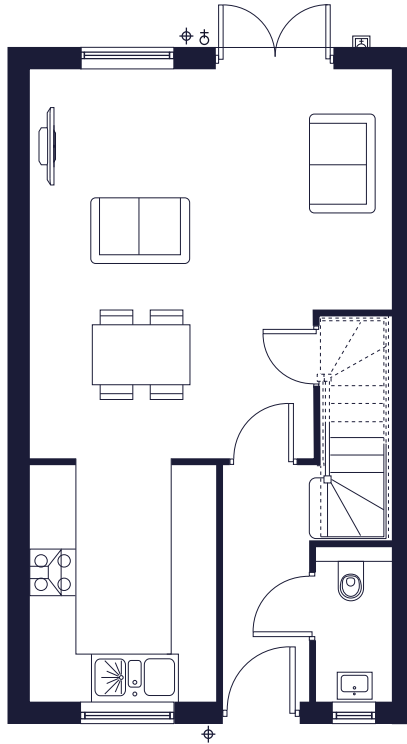


All measurements are approximate and may vary on site. CGIs and floor plans are indicative only and are subject to change. Please refer to the sales advisor for specific details as layout may be mirrored on individual plots.

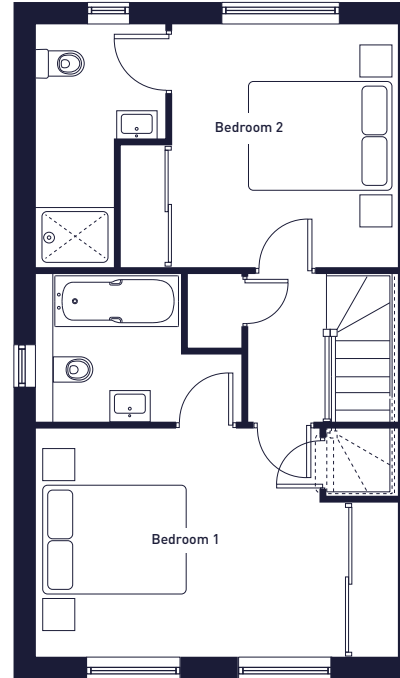
THE TENNYSON

80 sqm / 861 sqft

-  Exterior Socket
-  Light
-  Tap



GROUND FLOOR



FIRST FLOOR

PLOTS



HANDED*

Living Area	3.23m x 4.83m	10' 7" x 15' 10"
Dining Area	1.97m x 3.79m	6' 6" x 12' 5"
Kitchen	3.15m x 2.48m	10' 4" x 8' 2"

Bedroom 1	3.09m x 4.82m	10' 2" x 15' 10"
Bedroom 2	3.23m x 2.96m	10' 7" x 9' 9"



Single Garage
19 sqm / 204.5 sqft

FROM OUR FAMILY, TO YOURS...

Spacious Living

Freeman Homes is renowned for its generously proportioned properties, designed to evolve and offer a comfortable living experience for many years to come. Enjoy the luxury of more space with our thoughtfully planned layouts that flow seamlessly throughout the home.

Abundant Storage

Our homes feature an abundance of built-in storage throughout, providing ample space to store your most cherished possessions. This thoughtful detail consistently earns praise from our satisfied customers. We offer house designs and layouts specifically created for right-sizing moves to more manageable, low-maintenance, future-proof, and efficient living spaces.

Uncompromising Quality

Quality is synonymous with Freeman Homes. We build every home ourselves, from the ground up, ensuring they meet our exacting standards.

Peace of Mind

Each of our homes comes with a two-year homeowner warranty from Freeman Homes, along with a 10-year structural NHBC warranty. Our dedicated and friendly customer care team is always ready to assist with any questions or support you may need.

Outstanding Customer Service

We prioritise our customers at every stage of the process. From design and construction to handover, we strive to make your experience as stress-free and enjoyable as possible. We take the time to listen to and understand your needs, ensuring a truly personalised journey.

Award-Winning Excellence

Our growing collection of awards for design and innovation stands as a testament to our unwavering commitment to quality and placing sustainability at the heart of everything we do. When you choose Freeman Homes, you can be confident you are investing in the very best. A Freeman home is of the highest quality.



BUILDING FOR A BETTER FUTURE

At Freeman Homes, we recognise that the way we live is constantly evolving, and we are more committed than ever to building for a better future. Our homes provide generous spaces for working, relaxing, and enjoying leisure activities. Set in picturesque countryside, you can connect with nature right from your doorstep, while enjoying the convenience of village life and amenities, with easy access to excellent transport links.

We are a second-generation, family-owned business with a heritage dating back to 1966. Our commitment to excellence remains true to the values upon which our company was founded.

Family is at the heart of everything we do, and we take pride in creating homes where treasured memories are made. We are passionate about the stunning landscapes in which we build, actively seeking exceptional locations for lifestyles of choice.



FreemanHomes

SUPPORTING THE LOCAL COMMUNITY

Developing sustainable communities for a positive impact on society is core to our vision achieved through working closely with the communities we are growing, supporting local businesses, schools, clubs, and community projects.

GOOD IDEAS DO

BUILDING FOR
A BETTER FUTURE



Community Contribution

£1m



Support Services

£3,500



Library

£9,212



Home school Transport

£50,400



Refuse & Recycling

£3,431

We are contributing
£1,066,543
to Alderton and the surrounding local community

LOCAL LINKS

Some useful links to notable, local establishments, amenities and helpful websites we would like to share with you.

EXPLORE

www.cotswolds-nl.org.uk

www.visittewkesbury.info

www.visitcheltenham.com

www.aldertonvillage.co.uk

DESTINATIONS & EXPERIENCES

www.cheltenhamfestivals.org

www.gwsr.com

www.teddingtons.life

www.cotswoldsdesigneroutlet.com

www.bamford.com/cotswolds-daylesford-farm

www.thejockeyclub.co.uk/cheltenham

EDUCATION

www.aldertonacorns.org.uk

www.oakhill.gloucs.sch.uk

www.winchcombeschool.co.uk

www.patesgs.org

www.hsl.gloucs.sch.uk

www.cheltenhamcollege.org

www.deanclose.org.uk



DAYLESTONE PARK

ALDERTON, GLOUCESTERSHIRE

A PERSONALISED JOURNEY

At Freeman Homes, we pride ourselves on putting our customers at the heart of everything we do.

Experience a personalised homebuying journey where your individual needs are listened to and valued. As a family-run business, we understand the importance of the finer details and personal touches, making your move stress-free and enjoyable.

Our dedicated after-sales team is on hand to provide support and assistance long after your completion day. Your friendly and effective direct point of contact will be our Customer Services Manager, who will stay in touch and ensure your ongoing satisfaction.

*Don't just take our word for it.
Here is what some of our customers have said:*

“

“All the local people we spoke to commented on Freeman Homes' reputation for good quality building. Once we approached them we couldn't fail to be impressed. We highly recommend Freeman Homes for the quality of their work and caring attitude”

R & H Moir

“It has been a real pleasure to deal with them. I cannot recommend them highly enough and am happy to thank them for all their assistance”

Mr David Allen

“The location, design, and build of my new home are amazing. From my initial interest, to purchase and aftercare, the staff were helpful and informative – nothing was too much trouble.”

Mrs T Mills

“They were very easy to deal with, very gracious, trustworthy and reassuring. Buying a house can be stressful, but it was so refreshing. I recommend them to everyone, and my in-laws even moved into one!”

Kate

”





FreemanHomes

ENERGY-EFFICIENT
EPC A-RATED HOMES

Talk to our friendly team today

01594 543354

alderton@freemanhomes.co.uk

www.freemanhomes.co.uk

FreemanHomes

A division of the MF Freeman Group



Daylestone Park, Alderton, Gloucestershire, GL20 8NY